

Protecta-Line boundary box for contaminated land

Our Protecta-Line boundary box fuses the power of our Protecta-Line technology with the strength and versatility of our Adjusta range to produce a powerful and complete water supply solution in contaminated land applications.

The Protecta-Line barrier system and boundary box range is fully BS 8588 approved, raising the standards and providing total peace of mind for installers and asset owners alike.



BS 8588 approved for use in contaminated land



Powerful protection against all known contaminants



Forms part of our Protecta-Line range



Harnesses the strength of Adjusta...



...the only 'Grade B' load bearing, screw adjustable boundary box



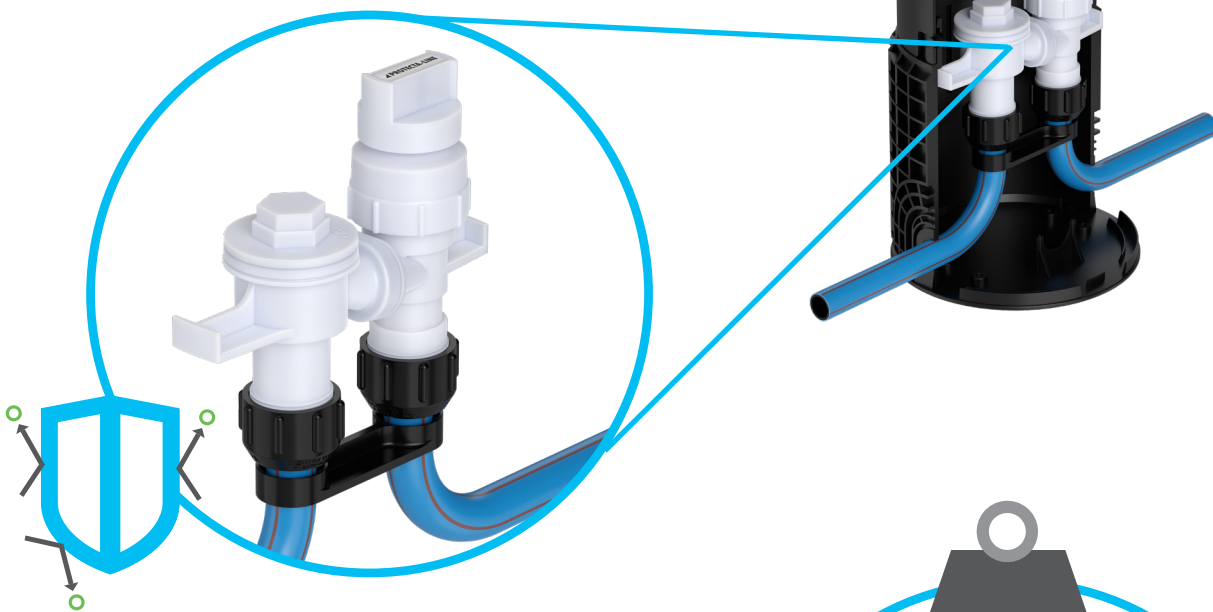
Compliant with WIS 4-37-01 and BS 5834-2



Protecta-Line boundary box for contaminated land

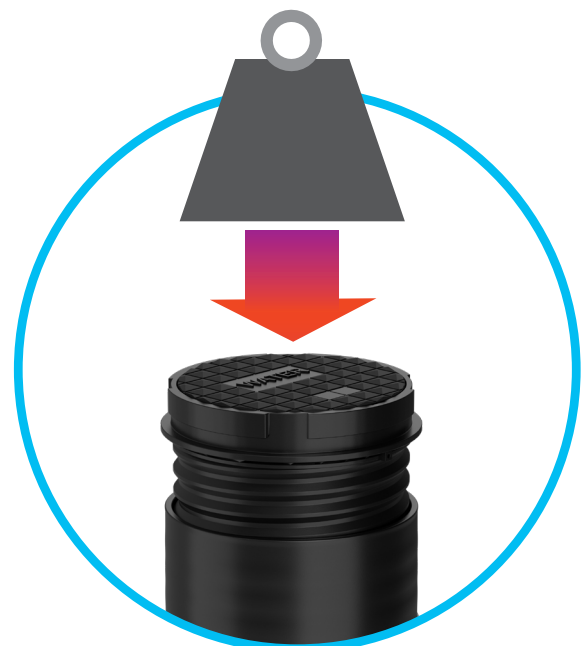
Powerful protection

Our Protecta-Line boundary box contains our next generation manifold featuring Protecta-Line tails and Philmac compression fittings for powerful protection against the ingress of contaminants.



Harnessing the strength of Adjusta...

...the only 'Grade B' load bearing, screw adjustable boundary box.



Protecta-Line boundary box for contaminated land



Standard lid

Additional lid options available:

Slope Adjusta

For level installations on sloping ground

Up to 10° adjustment



Square cowl

Surface finish for block and slab paved areas

Can be rotated by 360°

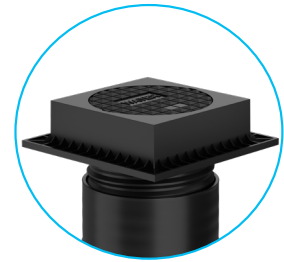
Detachable lid with bayonette feature



Surface box

Surface finish for block and slab paved areas

Fixed lid



Product code	Description	Height min	Height max
LUBA001P	Protecta-line Adjusta boundary box standard	580mm	790mm
LUBA002P	Protecta-line Adjusta boundary box with slope	680mm	890mm
LUBA003P	Protecta-line Adjusta boundary box with square cowl	580mm	790mm
LUBA004P	Protecta-line Adjusta boundary box with surface box	580mm	860mm

Lid options also available as separate accessories:

Product code	Description
LUBA0018	Slope Adjusta
LUBA1073	Square cowl
LUBA0043	Surface box

More accessories available, please see our Infrastructure networks range guide for more information.