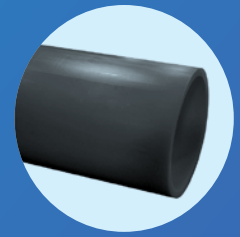


Product data sheet

GPS PE100 geothermal pipe

For below ground geothermal applications.




Range / pressure rating

Diameter size (mm)	SDR	Pressure rating	Material
32 & 40mm	11	12.5 bar	PE100

Other pressure ratings / SDRs may be produced on request.

Colours

Material	Colour
PE100	Black 

Standards / approvals

BS EN 12201-2
(BSI Kitemark Certificate
KM 508224)

Lengths

Pipes will be supplied in coil lengths of 50, 100, 150m.

Markings

Product will be marked on one side with characters at least 3mm high.

Note: Two types of marking maybe used, either "Hot foil impression" to a depth of 0.02mm – 0.15mm or "Inkjet printing". (Marking to be in blue or white).

The following identification and traceability marks should be printed once every metre;

- GPS (Manufacturers identification)
- Nominal size
- mm
- SDR
- PE100
- Pressure rating (bar)
- Geothermal Heat Collector pipe
- Material code (see note 1)
- DD/MM/YY
- Shift code (see note 3)
- Metre marker
- BS EN 12201-2 (see note 2)

Identification Marking

Note 1: The material code is specified in Works instruction and maybe suffixed as follows: R = 100% rework material.

Note 2: The use of this mark is Aliaxis' claim that the product has been manufactured in accordance with BS EN 12201-2

Note 3: The shift code denotes the extruder, shift week and year of manufacture plus the plant identification code.

Each item being allocated a maximum of 2 digits. Where the codes numerical value is less than 10 a 0 is inserted.

Or a simple date code may be used DD/MM/YY.

Batch number format

8 Digit Code	Extruder Number	Shift Number	Week Number	Year
	1 & 2	3 & 4	5 & 6	7 & 8
	01-23	01 - 14	01 - 52	01-99

Pipe dimensions – water applications (BS EN 12201-2)

SDR 11					
Nom. Size (mm) DN / OD	Max OD (mm)	Min t (mm)	Max t (mm)	Mean Weight (kg/m)	Mean Bore (mm)
32	32.3	3.0	3.4	0.3	25.8
40	40.4	3.7	4.2	0.4	32.3

GPS pipes, manufactured to BS EN 12201-2 standard, are capable of withstanding transient surge pressures of up to twice the rated pressure of the pipe.

